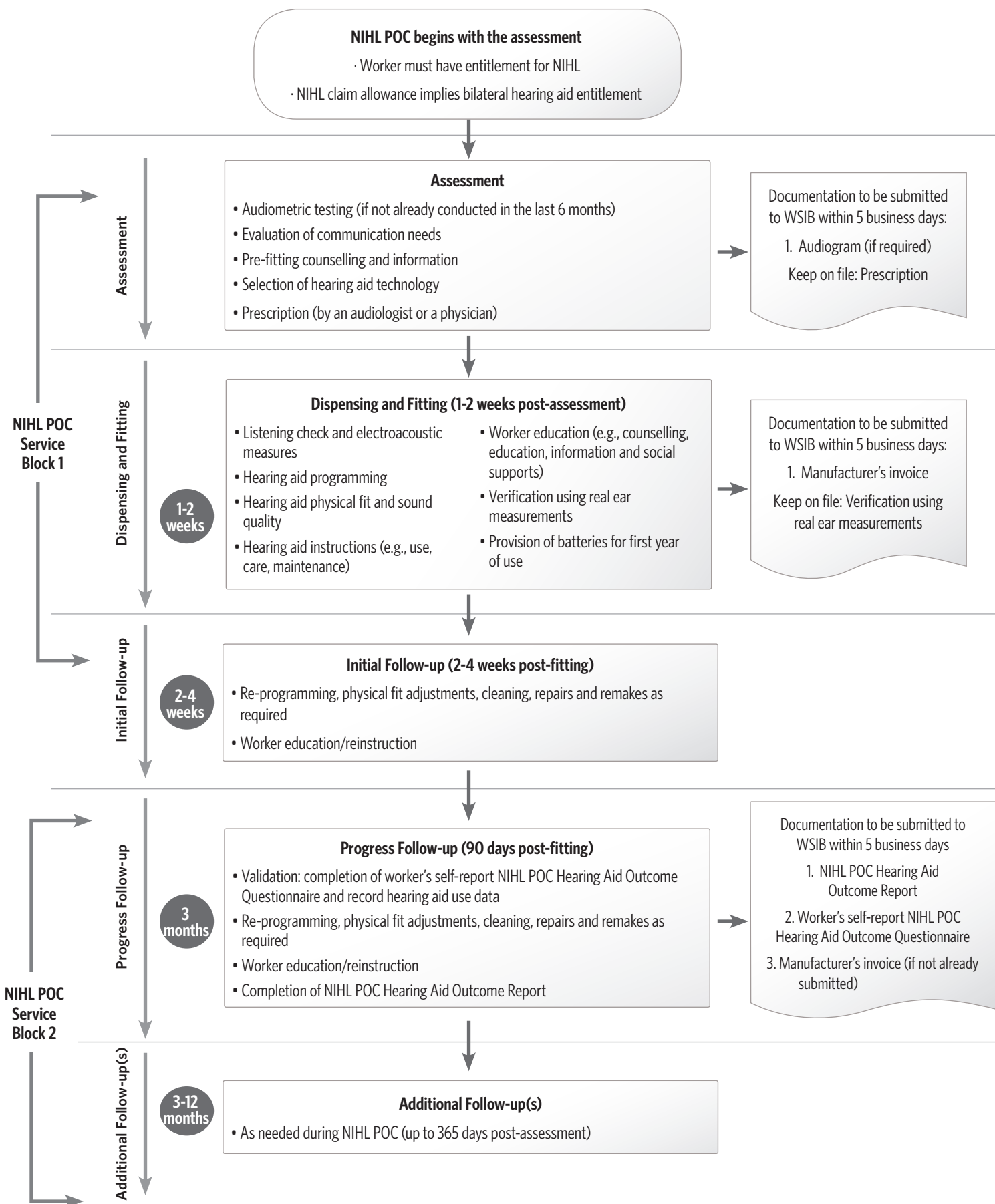


# NOISE INDUCED HEARING LOSS PROGRAM OF CARE (NIHL POC)

## Algorithm



NIHL POC Service Block 1

Assessment

Dispensing and Fitting

1-2 weeks

Initial Follow-up

2-4 weeks

Progress Follow-up

3 months

NIHL POC Service Block 2

Additional Follow-up(s)

3-12 months